

Plymouth on Stamps



- Places
- People
- Ships
- Postmarks
- Cinderellas

Presented
by
Terry
Cowland



Plymouth on Stamps



- Places
- People
- Ships
- Postmarks
- Cinderellas

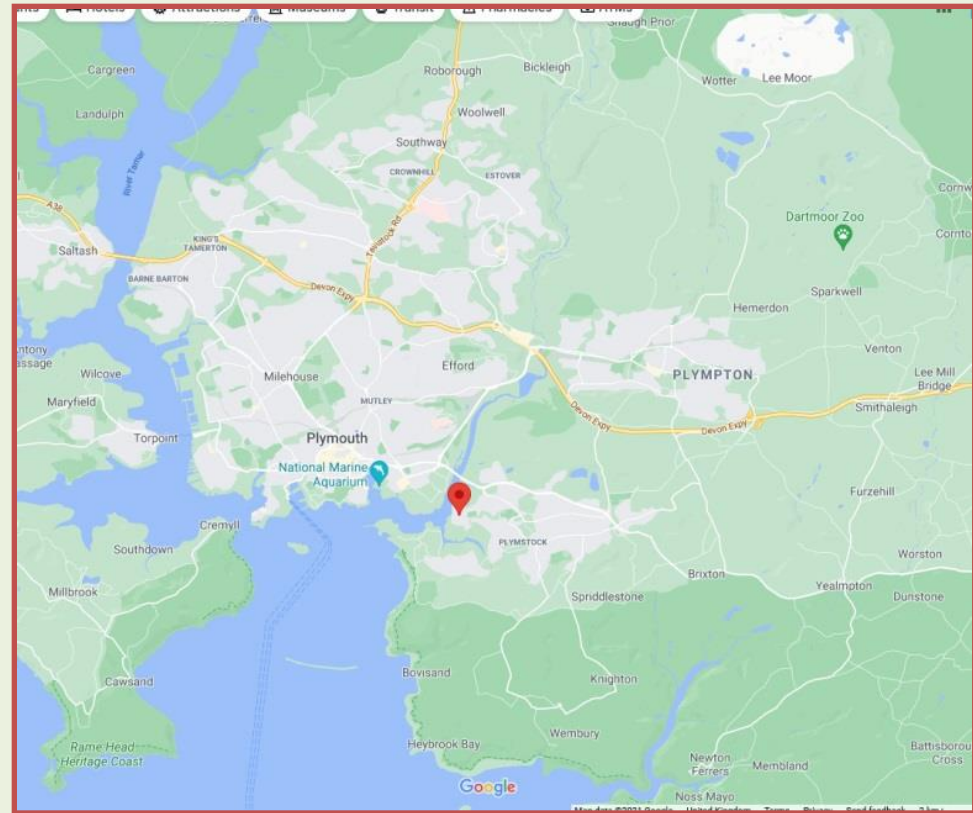


Plymouth on Stamps



Oreston is at the Red arrow

Oreston has about 3000 residents, and is famous for the past discovery of Rhino bones, and supplying stone for Plymouth Breakwater. Oreston was briefly the home of Alexander Selkirk, a real-life castaway who lived the story that led to Robinson Crusoe

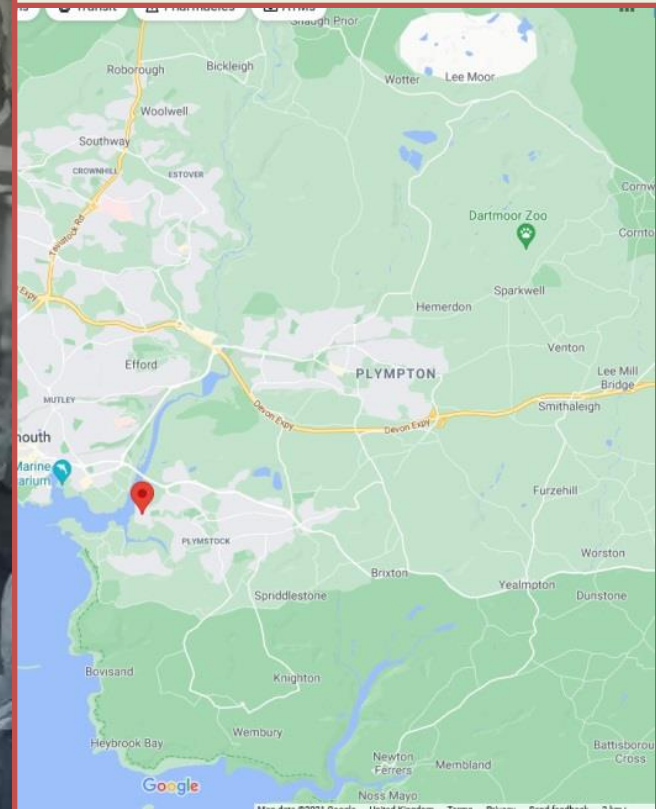


Plymouth on Stamps



Homecoming at Oreston after WWII

Oreston is at the Red arrow



Plymouth on Stamps



Move up
Oreston Road,
past the School
to where
the red car is

Old Police
House
& nearby
bungalow

Plymouth on Stamps



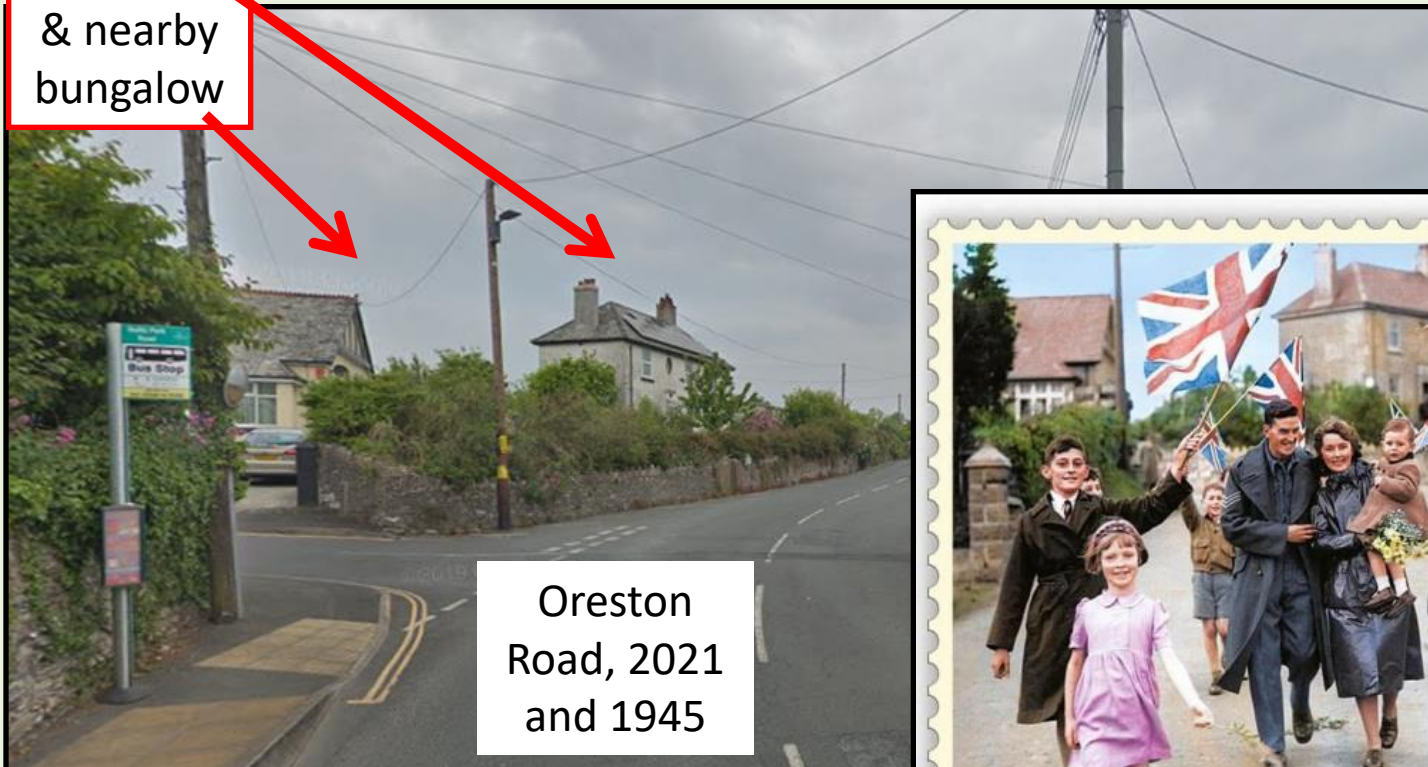
Oreston
Road, 2021
and 1945

Old Police
House
& nearby
bungalow

Plymouth on Stamps



End of WW2
(May 2020 issue)



Oreston
Road, 2021
and 1945



📺 From the left the picture shows Roger Axworthy, Derek Dymond (just visible behind Roger's left shoulder), June Tapper, in pink, Mike Turpitt, just behind the Sgt's stripes on Frank Tucker's sleeve, Mrs Tucker carrying Brian Tucker, their son. To the right of the trio are Ann Tapper, partially obscured, Brian Axworthy and Bill Hill, Margaret Elford, in the white blouse and Colin White, with the cap, peak turned up, and the flag. (Image: Royal Mail)

Old Police
House
& nearby
bungalow

Plymouth on Stamps



End of WW2
(May 2020 issue)



📺 From the left the picture shows Roger Axworthy, Derek Dymond (just visible behind Roger's left shoulder), June Tapper, in pink, Mike Turpitt, just behind the Sgt's stripes on Frank Tucker's sleeve, Mrs Tucker carrying Brian Tucker, their son. To the right of the trio are Ann Tapper, partially obscured, Brian Axworthy and Bill Hill, Margaret Elford, in the white blouse and Colin White, with the cap, peak turned up, and the flag. (Image: Royal Mail)

Plymouth on Stamps



Laurence Axworthy



Plymouth on Stamps

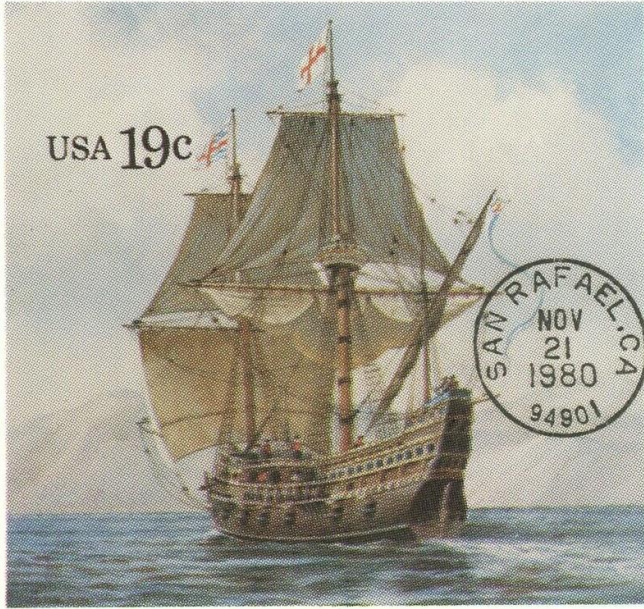


Sir Francis Drake

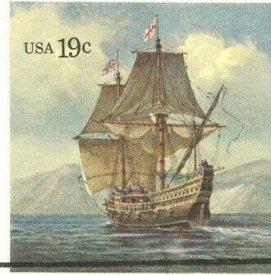


From Tavistock, became Mayor of Plymouth, and was Vice Admiral in 1588 on “Revenge” when attacking the Spanish Armada

Plymouth on Stamps



© USPS 1990 Drake's Golden Hinde 1580



Drake's Golden Hinde 1580

FIRST DAY OF ISSUE

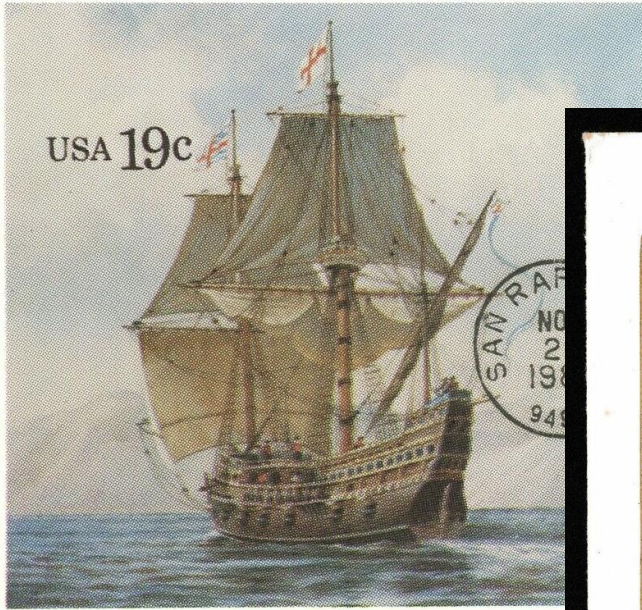


The Pelican

Plymouth on Stamps

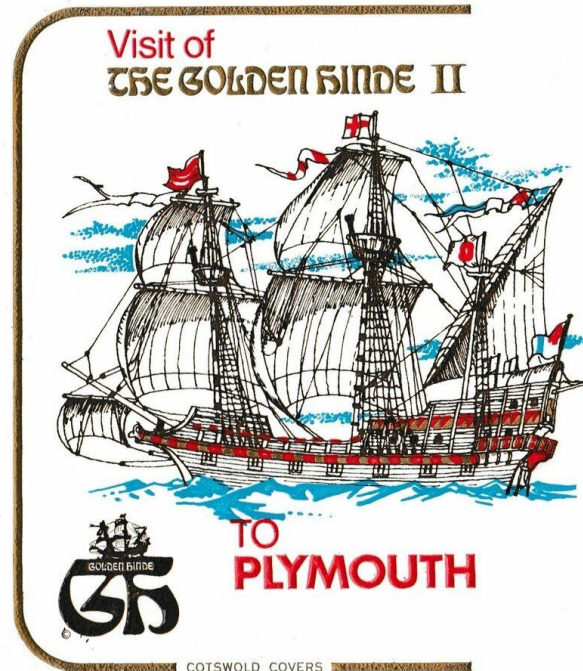


The Golden Hinde II



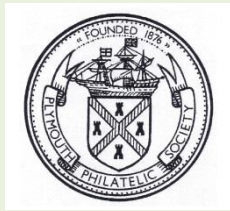
Drake's Golden Hinde 1596
© USPS 1996

The Pelican



Mrs. S.J. Rolfe,
Broadway Garage,
TOTLAND BAY,
I.O.W. PO39 0E7

Plymouth on Stamps



Island
named
after
Sir
Francis
Drake

Plymouth on Stamps



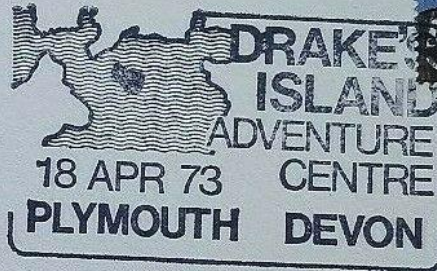
Drake's Island



DRAKE'S DRUM

Commemorative Cover

COTSWOLD COVERS



Mr. D. Beavington,
39, Ladysmith road,
Plymouth,
Devon.

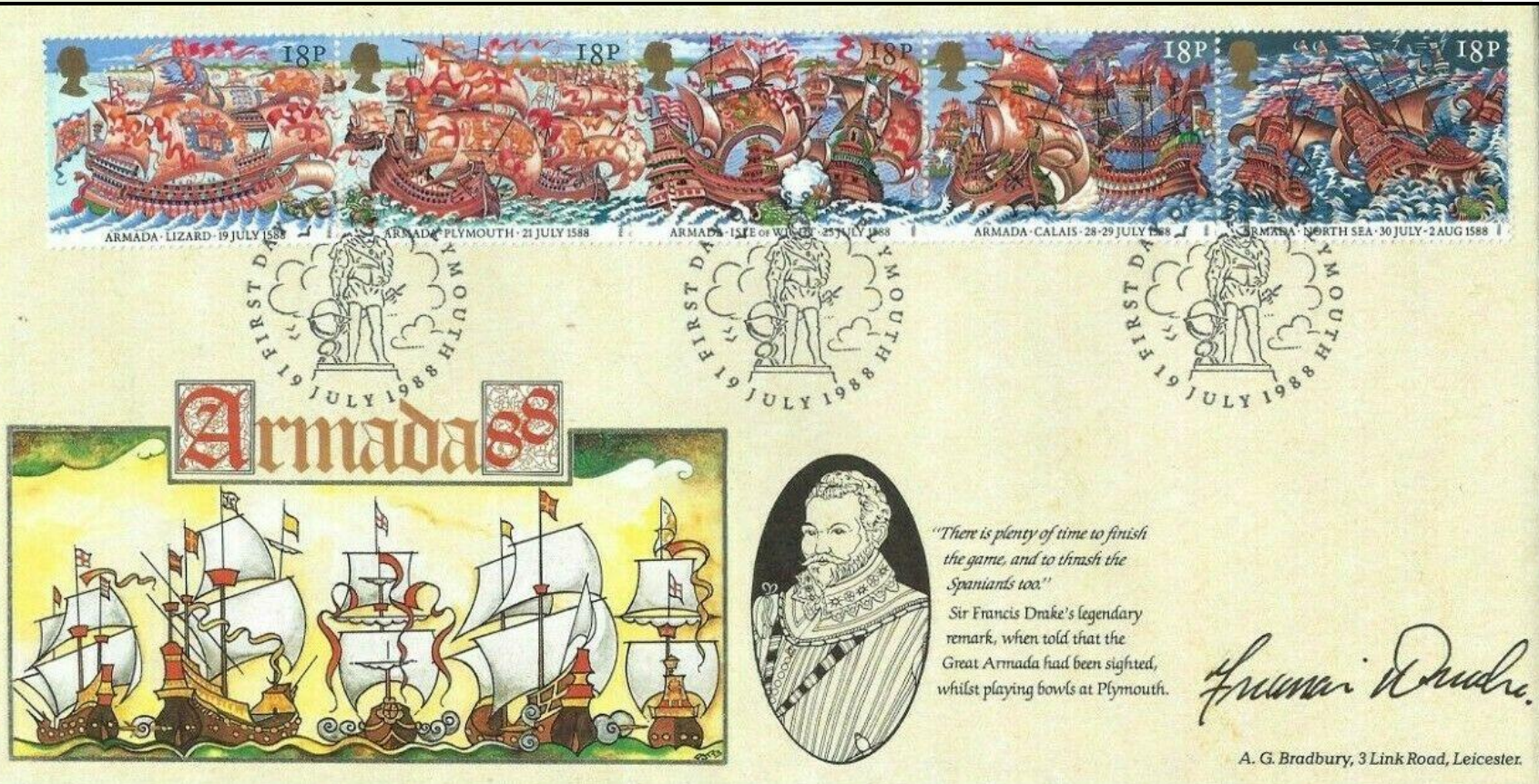
Island
named
after
Sir
Francis
Drake

Plymouth on Stamps



On the back are
“Locals”
issued
on the
Island .

Plymouth on Stamps



Spanish Armada FDC with Plymouth CDS and signed

Brian Whipp who Played the Part

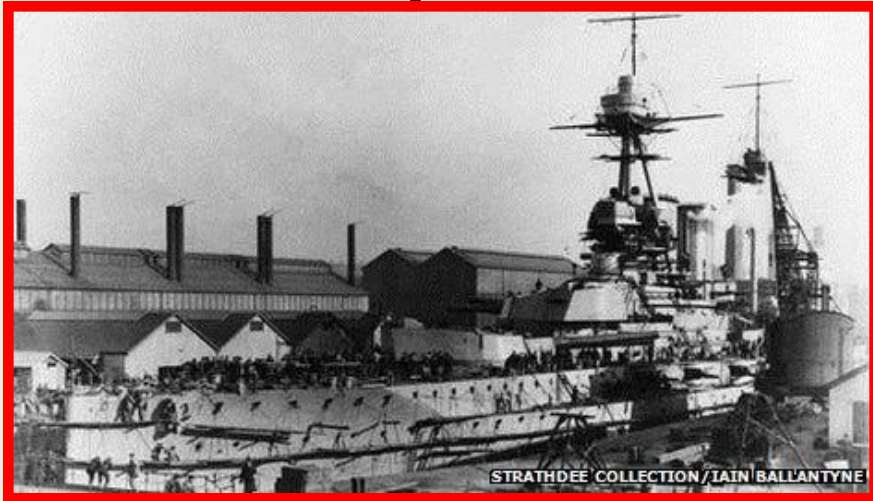
Plymouth on Stamps



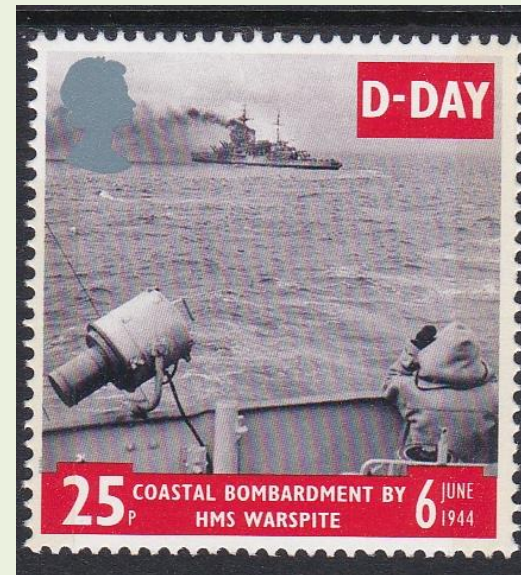
The
next-to-left
stamp
in the strip



Plymouth on Stamps



HMS
Warspite,
built 1913
in
Plymouth



Plymouth on Stamps

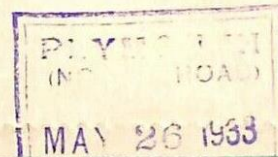


1971 Postal Strike –
Local mail service by
Pennycomequick taxi firm

Plymouth on Stamps



Great Western Railway
Air Service
Plymouth-Cardiff.



Mr. G. F. Jones,
27 Pleasant View,
Tylorstown,
Rhondda,
South Wales.

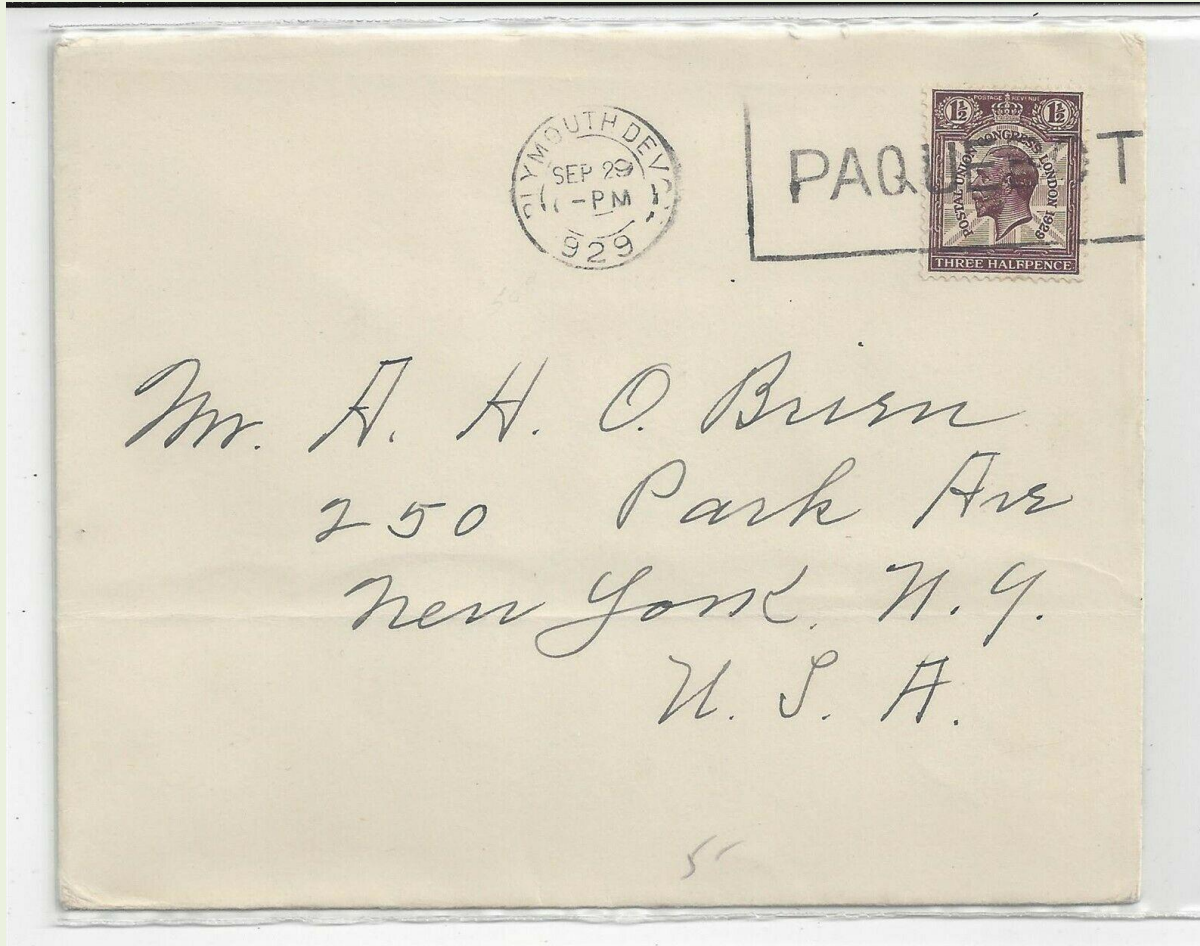
G.W.R.
Air
Service

Plymouth on Stamps



West of
England
Air
Service

Plymouth on Stamps



Posted
on board
a ship

Plymouth on Stamps



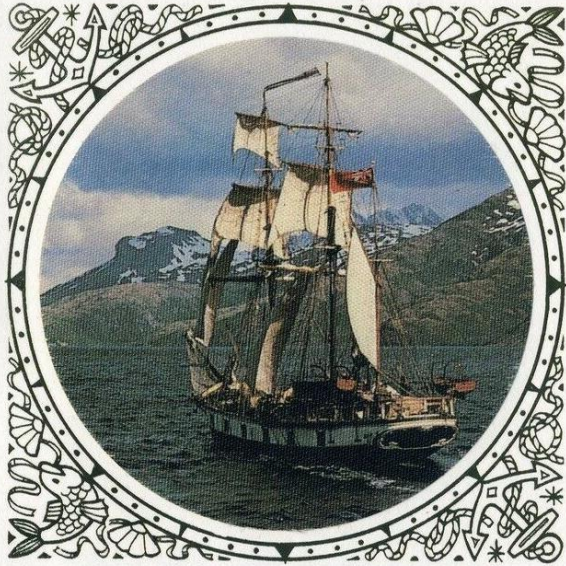
Posted
on board
a ship

Plymouth on Stamps

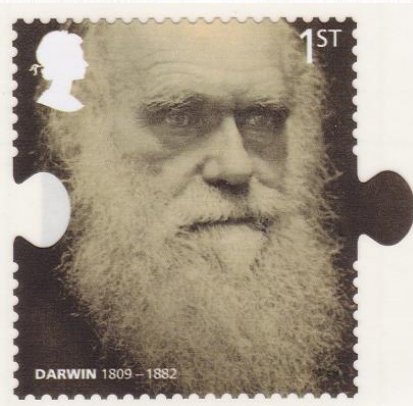
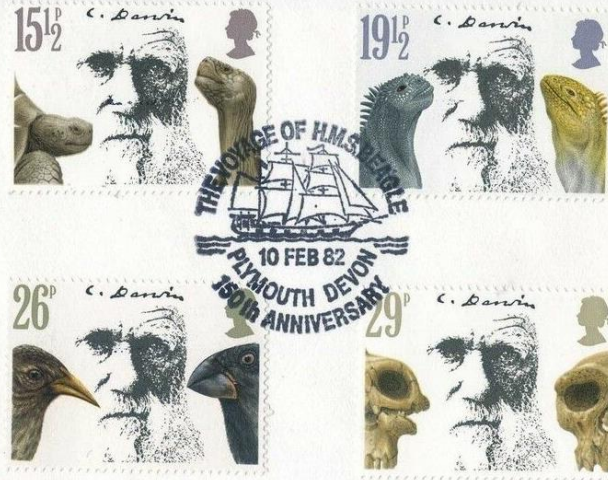


Darwin
sailed from
Plymouth
on the
Beagle 27
Dec 1831

THE VOYAGE of H.M.S. BEAGLE



150th ANNIVERSARY



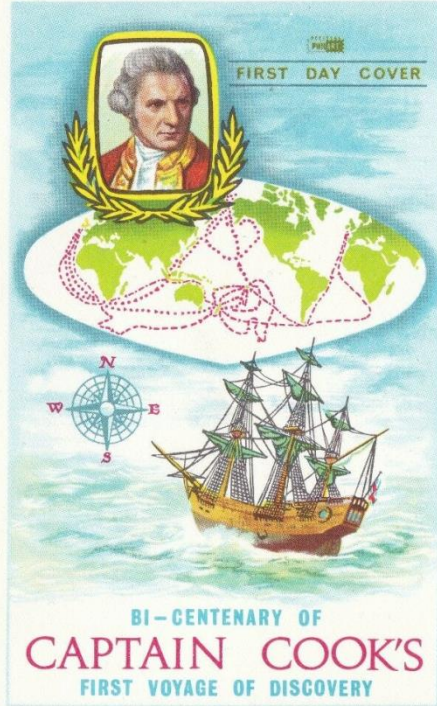
) 22/28 High Street, Hythe, K



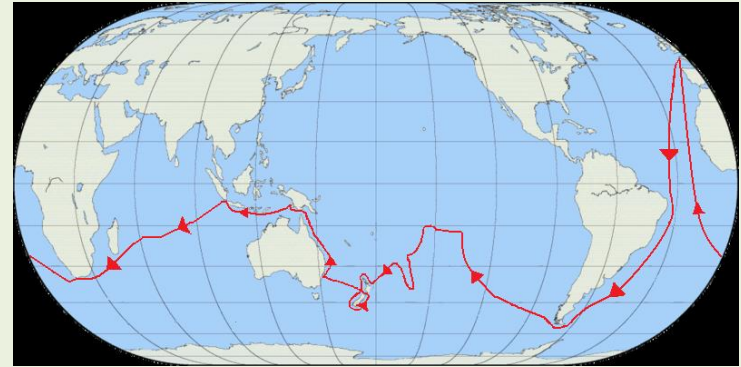
Plymouth on Stamps



Captain Cook sailed from Plymouth
on the Endeavour in 1768

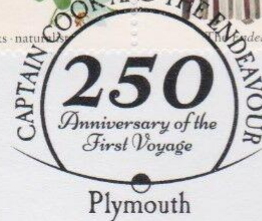
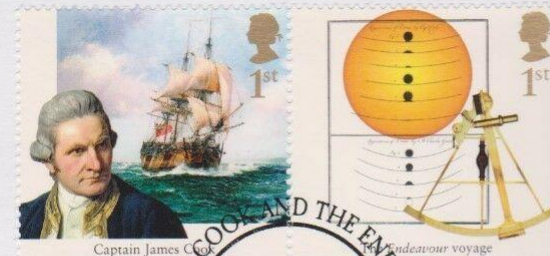
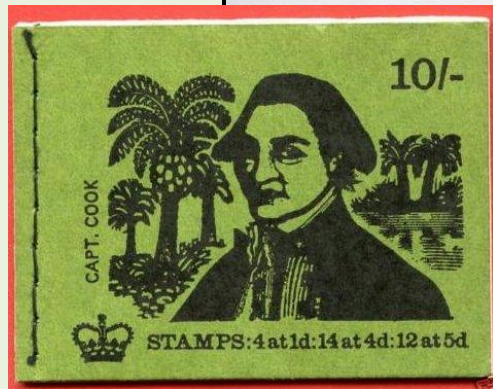


Mr. A.D. Holland,
c/o 22 Frankfort Gate,
PLYMOUTH.



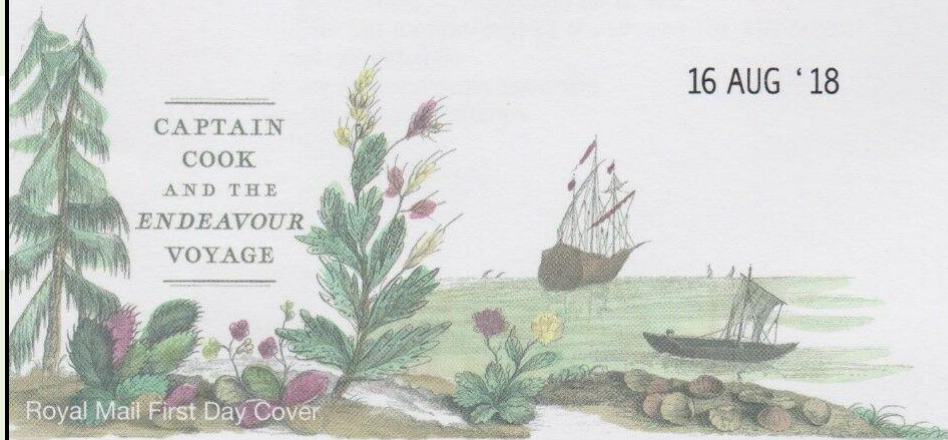
Captain Cook sailed from Plymouth
on 2 later voyages in 1772 & 1776

Plymouth on Stamps



16 AUG '18

16 AUG '18



Royal Mail First Day Cover

Royal Mail Tallents House 21 South Gyle Crescent Edinburgh EH12 9PB

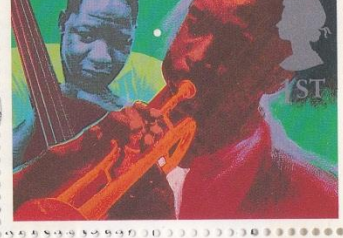
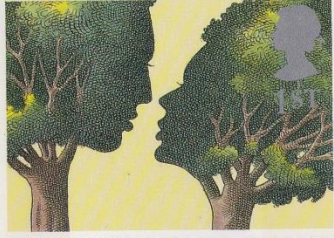
Captain
Cook set
from 2018

Plymouth on Stamps



The other Cook, linked with the Dolphin, Plymouth Barbican

Plymouth on Stamps



W2 W4

W5

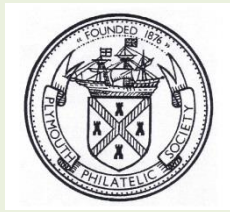
W2

W4

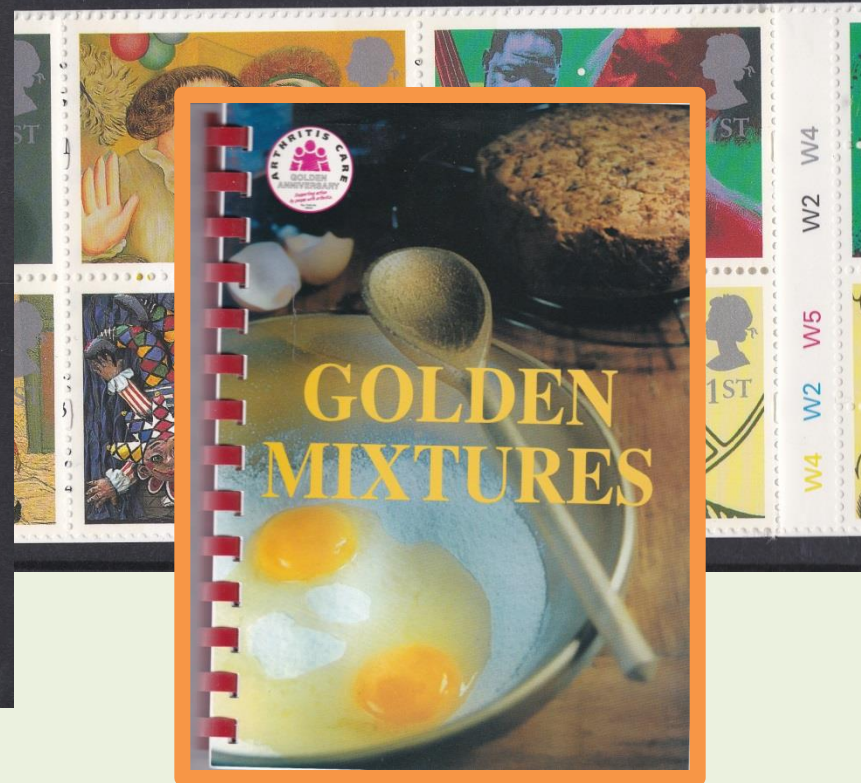
A 1st class postage stamp featuring a painting of two smiling women with large noses and hands raised, set against a yellow background with balloons and a purple silhouette of Queen Elizabeth II. The stamp has a perforated edge and is mounted on a cream-colored card.



Plymouth on Stamps



Beryl Cook



Plymouth on Stamps



Dear Janet Cowland Sunday
Thank you for sending
the cook book, I'm pleased to
hear it's been popular. I'll be
sending you one of mine for
the raffle and this will be
late September or early October.
Best wishes
Beryl Cook

Greetings ('Girls on the Town' from Bouncers by Beryl Cook:
Victor Gollancz 1991; © Beryl Cook 1991. Reproduced by
arrangement with Rogers, Coleridge & White Ltd, London)
Reproduced from a stamp designed by Newell and Sorrell
and issued by Royal Mail on 21 March 1995

Printed by The White Dove Press, Southend SS2 6UN, UK
© Royal Mail 1995

Plymouth on Stamps



Beryl Cook 1926-2008

land Sunday
for sending
I'm pleased to
popular. I'll be
of mine for
this will be
on early October.
wishes
Beryl Cook

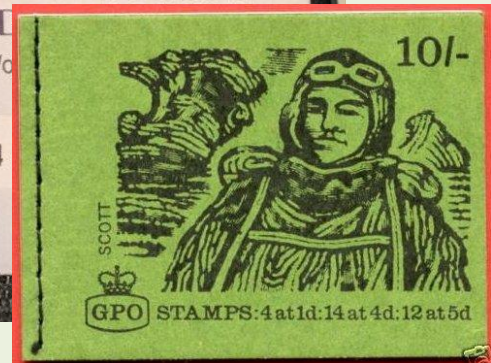
Greetings ('Girls on the Town' from Bouncers by Beryl Cook: Victor Gollancz 1991; © Beryl Cook 1991. Reproduced by arrangement with Rogers, Coleridge & White Ltd, London) Reproduced from a stamp designed by Newell and Sorrell and issued by Royal Mail on 21 March 1995

Printed by The White Dove Press, Southend SS2 6UN, UK
© Royal Mail 1995

Plymouth on Stamps



Ernest Shackleton - Francis Chichester - Sir Robert Falcon Scott



Plymouth on Stamps

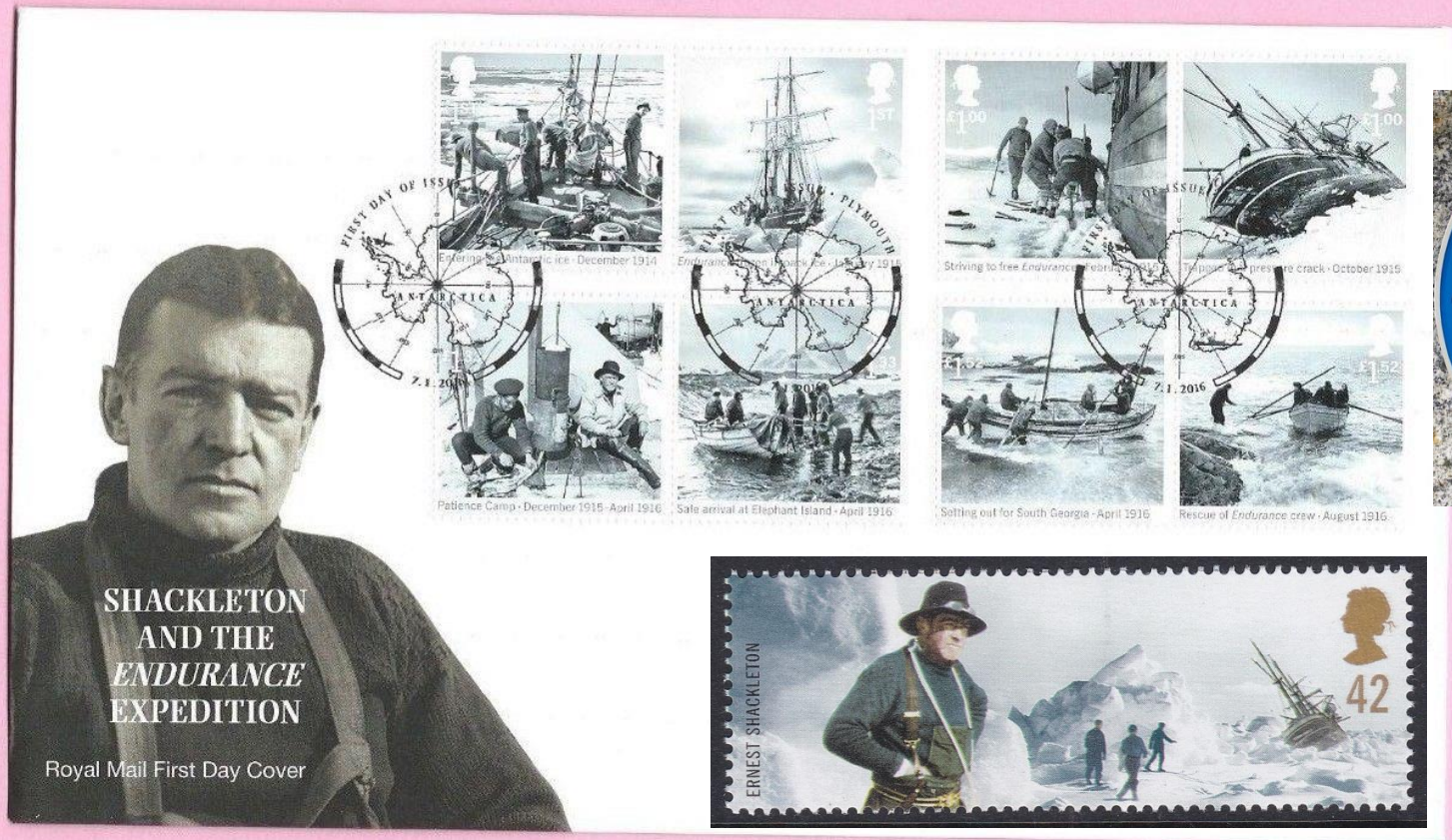
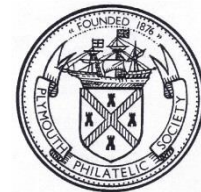


Robert Falcon Scott, born in Plymouth



Scott Memorial, Mount Wise, Plymouth

Plymouth on Stamps

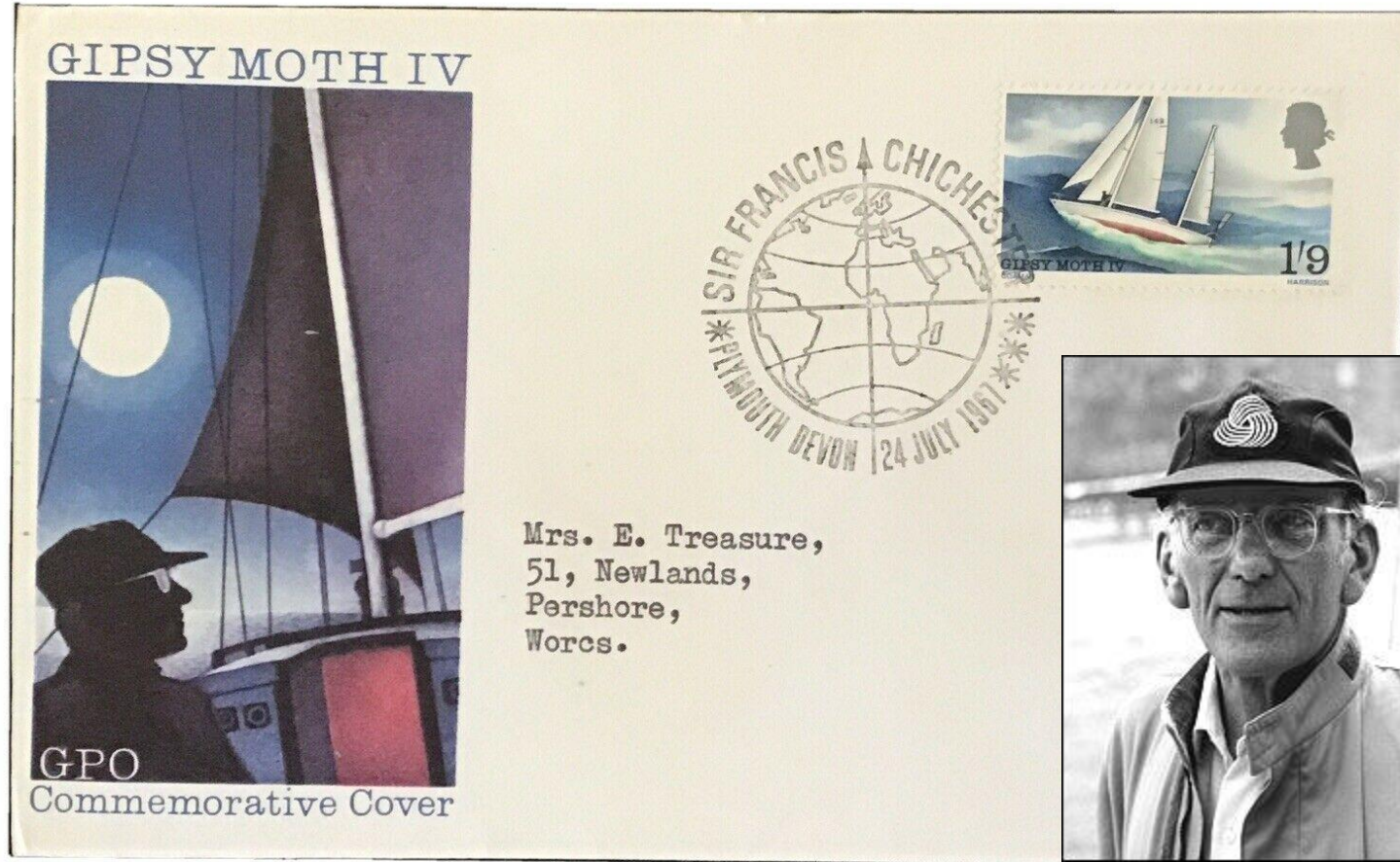


The Endurance sailed from Plymouth

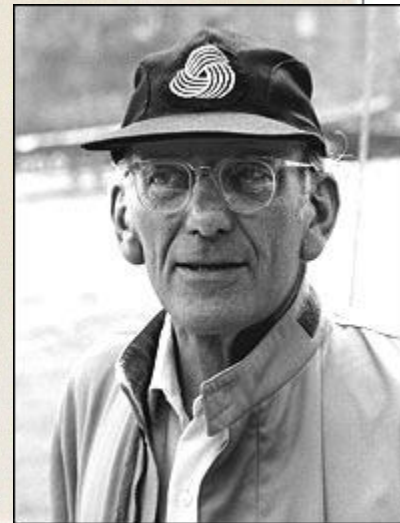
Plymouth on Stamps



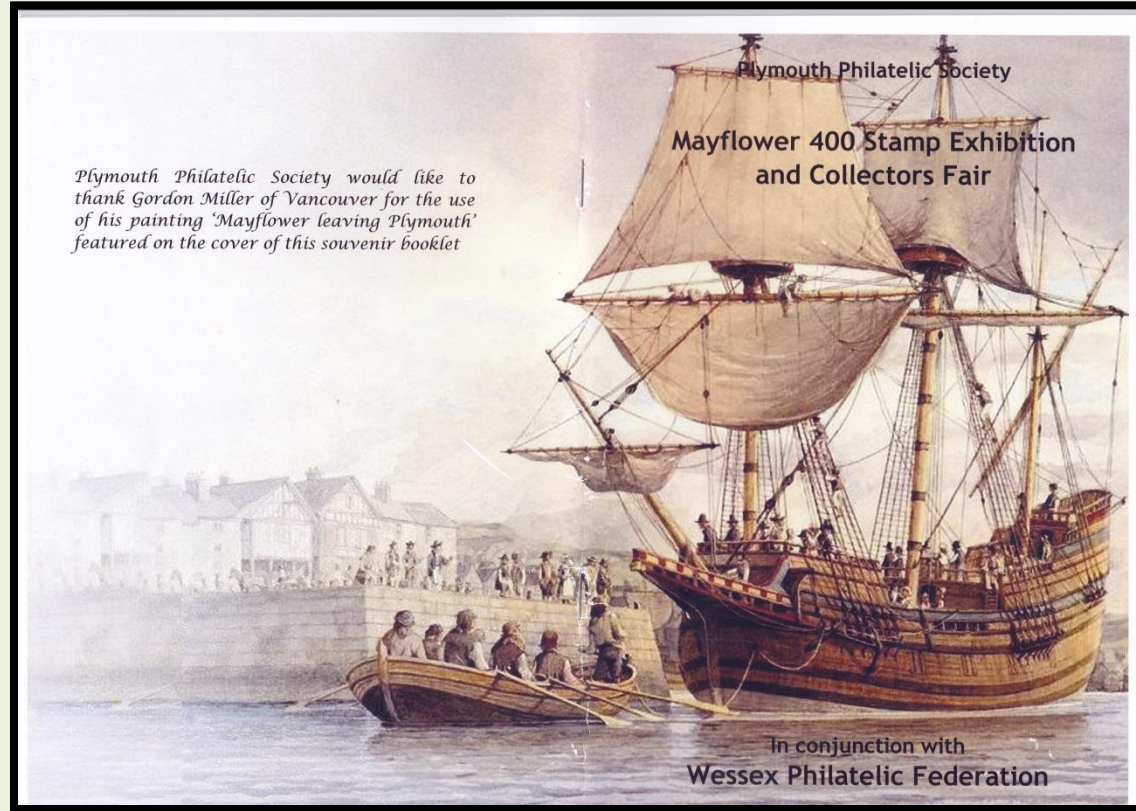
Francis
Chichester sailed
from &
returned to
Plymouth after
226 days on
Gypsy Moth IV



Mrs. E. Treasure,
51, Newlands,
Persnore,
Worcs.



Plymouth on Stamps



The final departure of the Mayflower was from Plymouth

2020

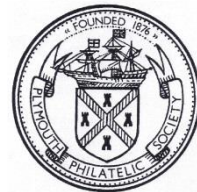
Plymouth on Stamps



1920



Painting by
Gordon Miller



The final departure of the Mayflower was from Plymouth

2020

Plymouth on Stamps



1970

Painting by
Gordon Miller

1920

USA
1970



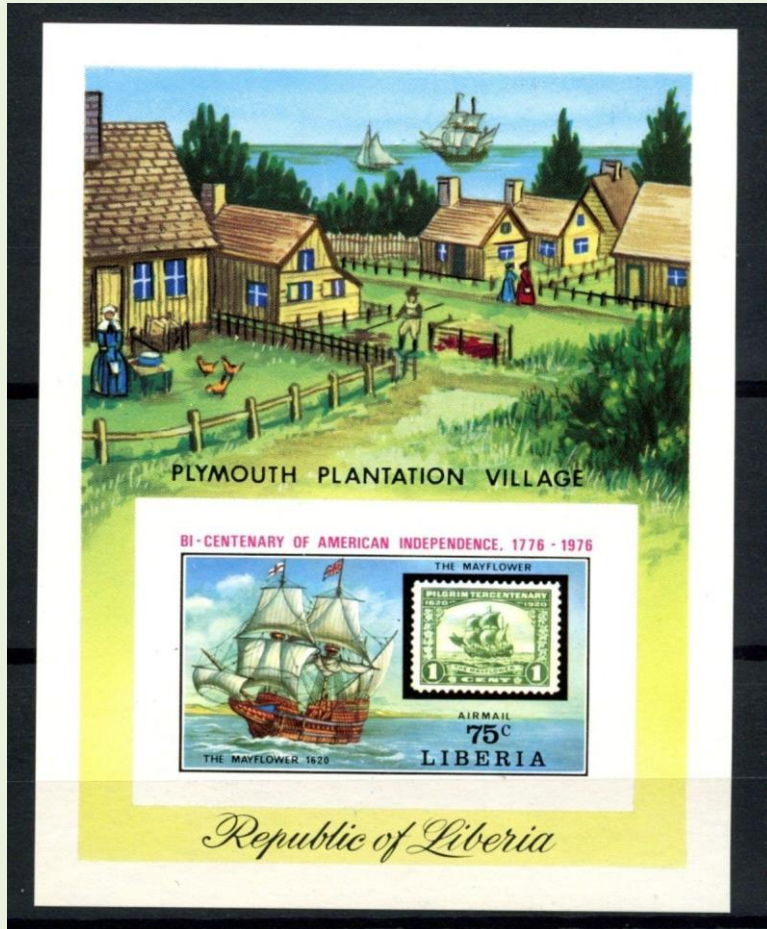
2020

2020

The final departure of the Mayflower was from Plymouth

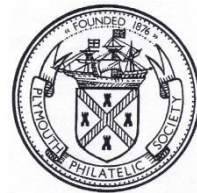
The map is titled "NEW ENGLAND" and "ADMIRALN DES NEWEN INGLANDS AB CONTRACTE DES H. HABTMAN JOHANN SCHMIDT". It features a portrait of Johann Schmidt in the top left corner. The map shows the coastline of New England, with various settlements and geographical features labeled. A red arrow points to the location of Plymouth on the map.

Plymouth on Stamps



Plimoth Plantation, Massachusetts

Plymouth on Stamps



PILGRIMS
Tercentenary
slogan
postmark



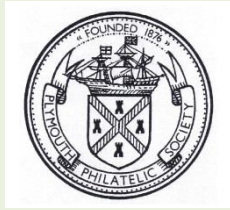
50 cents
1920

Plymouth on Stamps



Sir Humphrey Gilbert
Born in Compton Castle,
Devon

Plymouth on Stamps



FROM PLYMOUTH SOUND ON JUNE 11TH 1583.
SIR HUMPHREY GILBERT.
"THE FATHER OF BRITISH COLONISATION"
SET SAIL FOR NEWFOUNDLAND,
WHICH HE CLAIMED FOR QUEEN ELIZABETH I
ON 5TH AUGUST.
THIS PLAQUE WAS UNVEILED BY
THE HONOURABLE A. BRIAN PECKFORD, P. C.,
PREMIER OF NEWFOUNDLAND AND LABRADOR
ON JUNE 14TH 1983 IN THE PRESENCE OF
COUNCILLOR DEREK MITCHELL,
LORD MAYOR OF PLYMOUTH,
TO COMMEMORATE THE 400TH ANNIVERSARY
OF GILBERT'S VOYAGE.



The fleet leaving from Plymouth for
Newfoundland, 1583

Plymouth on Stamps



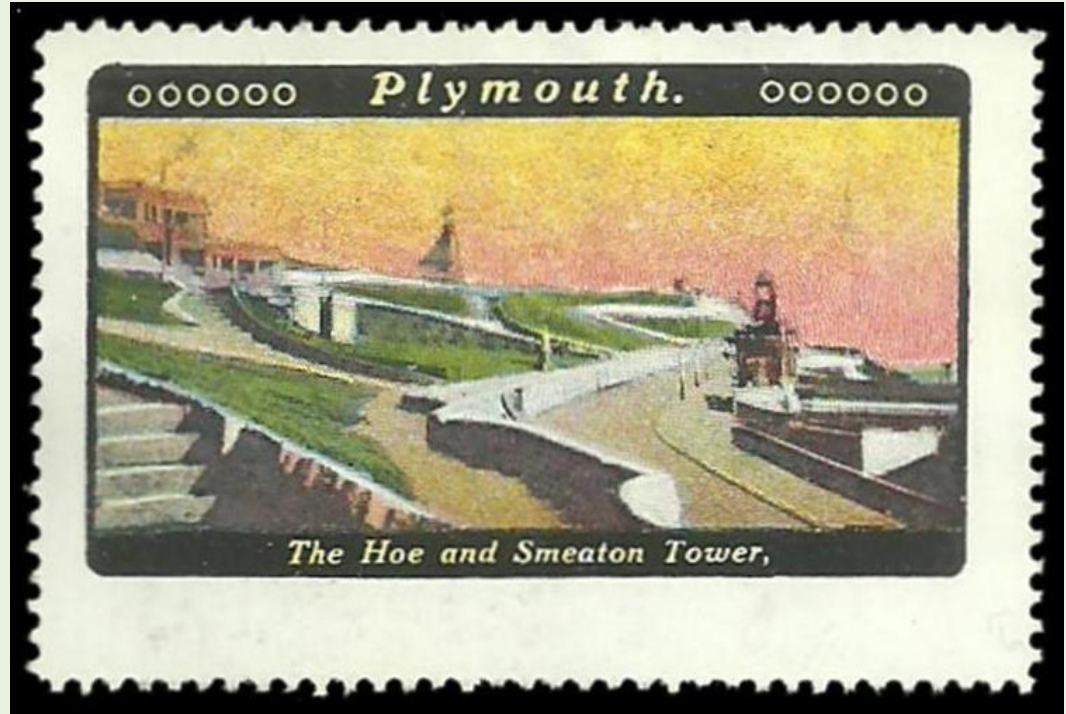
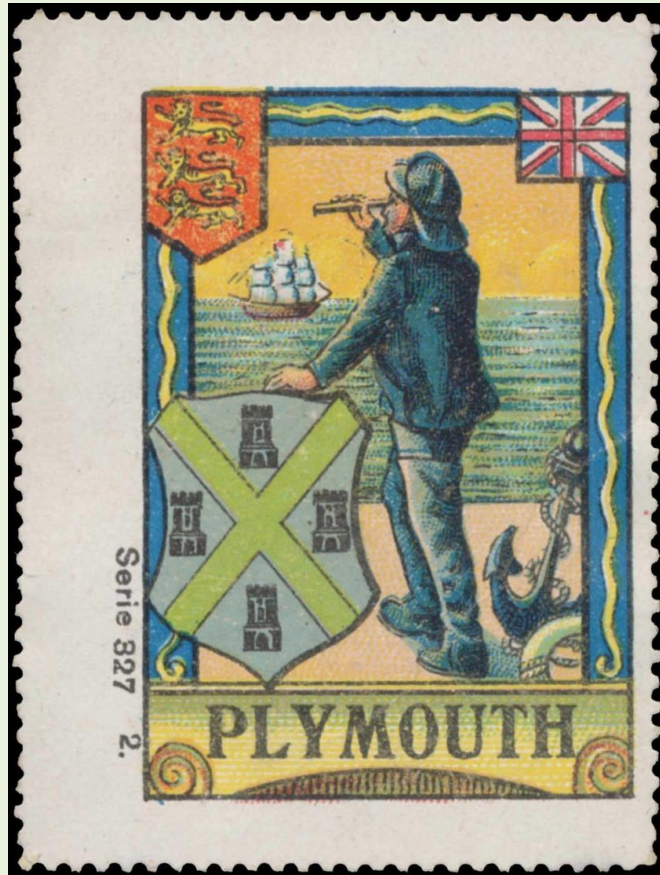
New Plymouth, North Island

Plymouth on Stamps



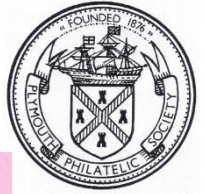
Plymouth, Montserrat

Plymouth on Stamps

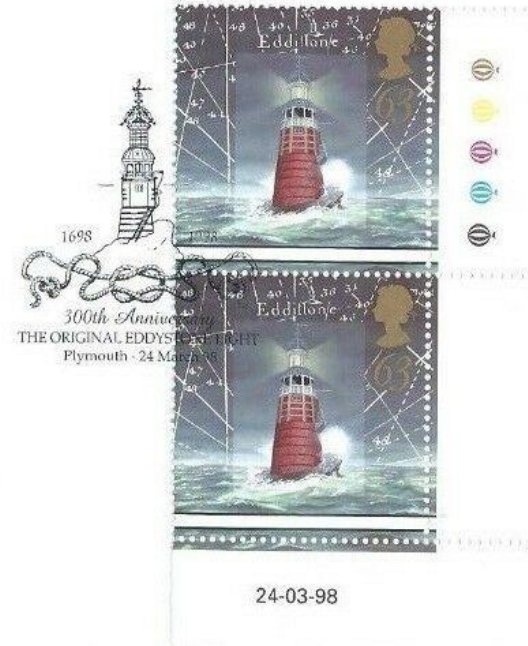



German "Poster" stamps

Plymouth on Stamps



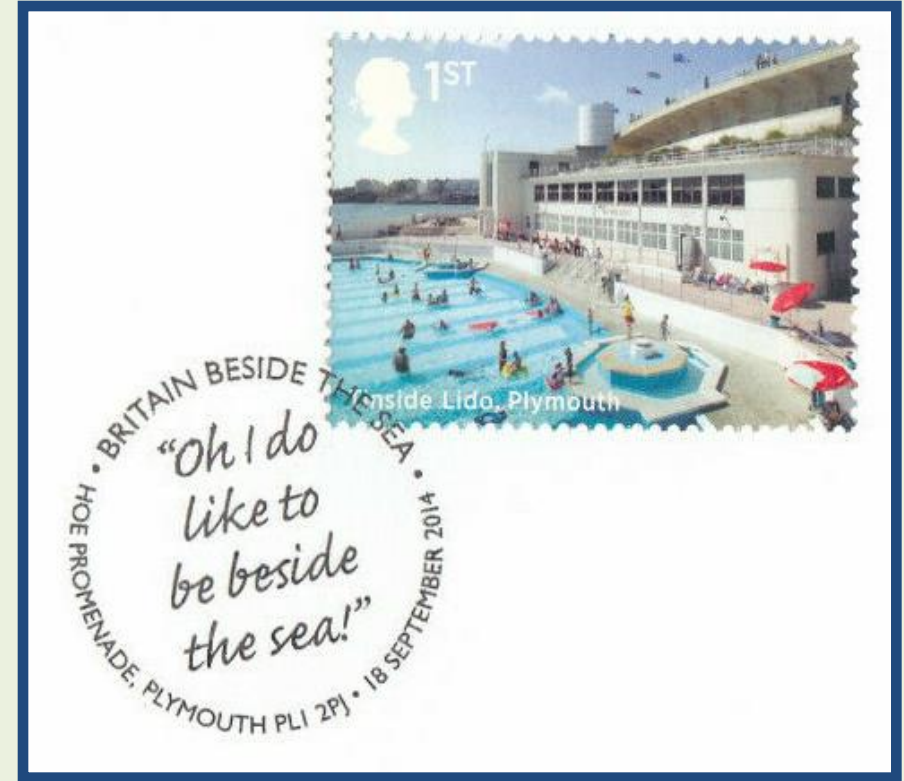
300th Anniversary 1698-1998
THE EDDYSTONE LIGHT



Benham, Folkestone, Kent  BLC.S141

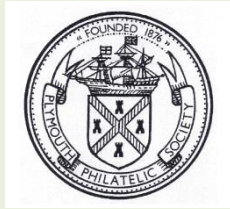
The Original Wooden Eddystone lighthouse by Henry Winstanley 1698 - 1703

Plymouth on Stamps



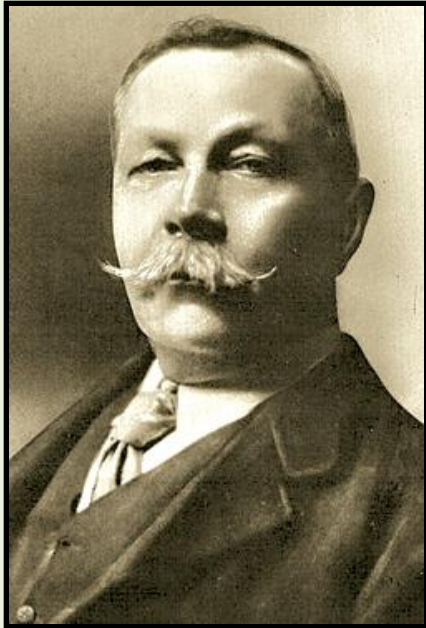
Tinside Lido, Plymouth Hoe

Plymouth on Stamps



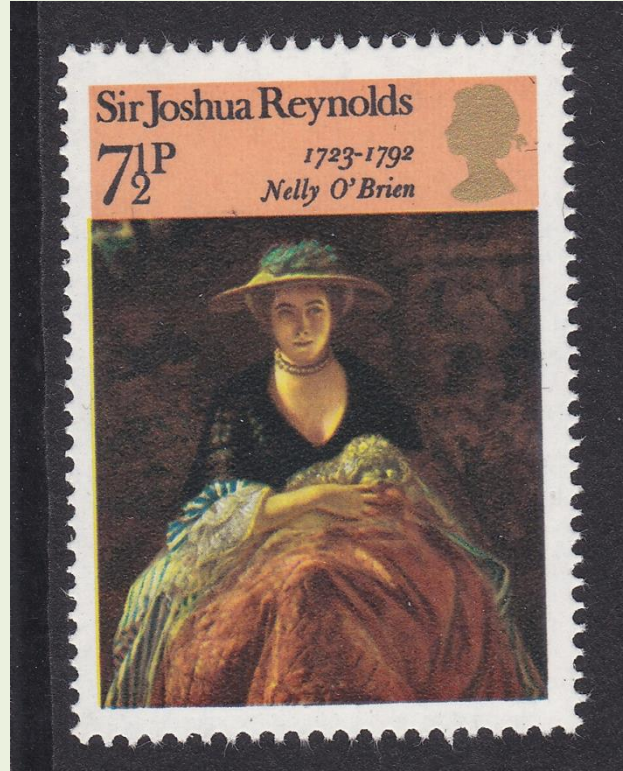
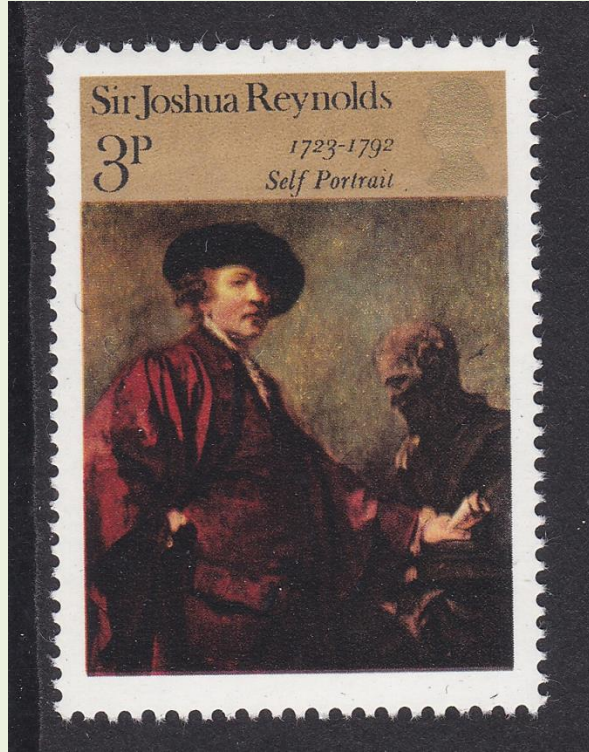
Royal Albert Bridge 2006

Plymouth on Stamps



Sir Arthur Conan Doyle - briefly a doctor in Plymouth

Plymouth on Stamps



Joshua Reynolds, born in Plymouth, 1st President of Royal Academy

Plymouth on Stamps



2003 - 50th Anniversary of the Queen's Coronation

Plymouth on Stamps



The formal description
is

“Children in Plymouth
working on
Royal Montage”

2003 - 50th Anniversary of the Queen's Coronation

Plymouth on Stamps



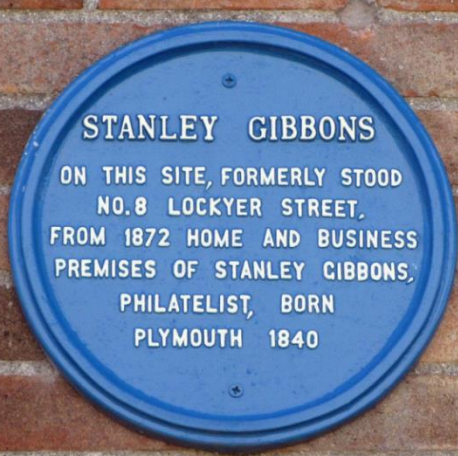
Pyrus cordata



The Plymouth Pear (a rare fruit tree)

2009

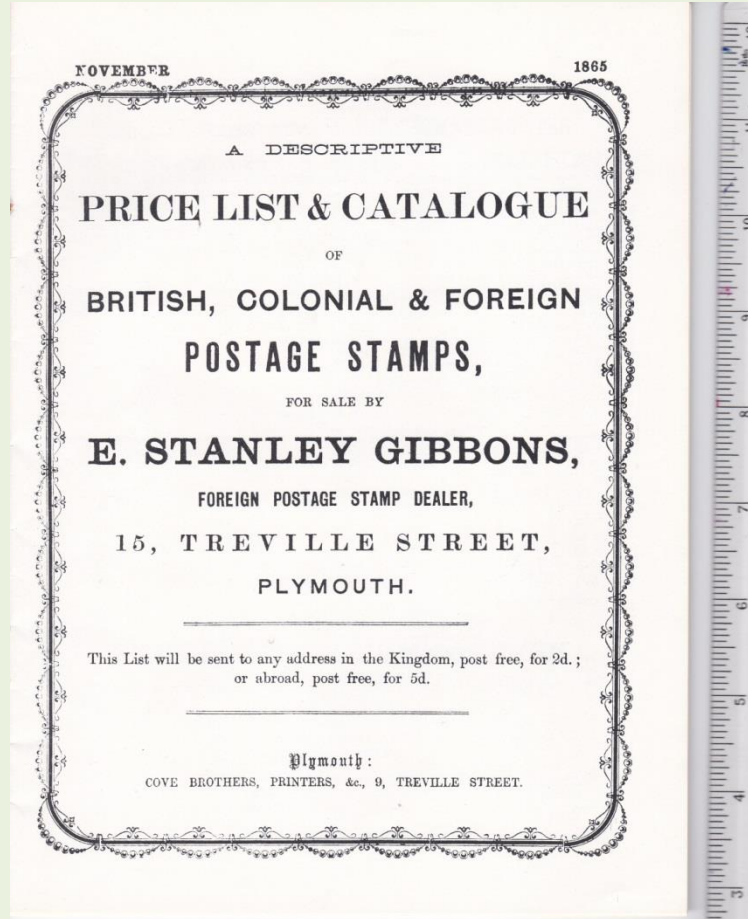
Plymouth on Stamps



Edward Stanley Gibbons was born in Plymouth on 21 June 1840

He was married 5 times, but left his estate to his "dear friend" Mabel, not his 5th wife !

Plymouth on Stamps

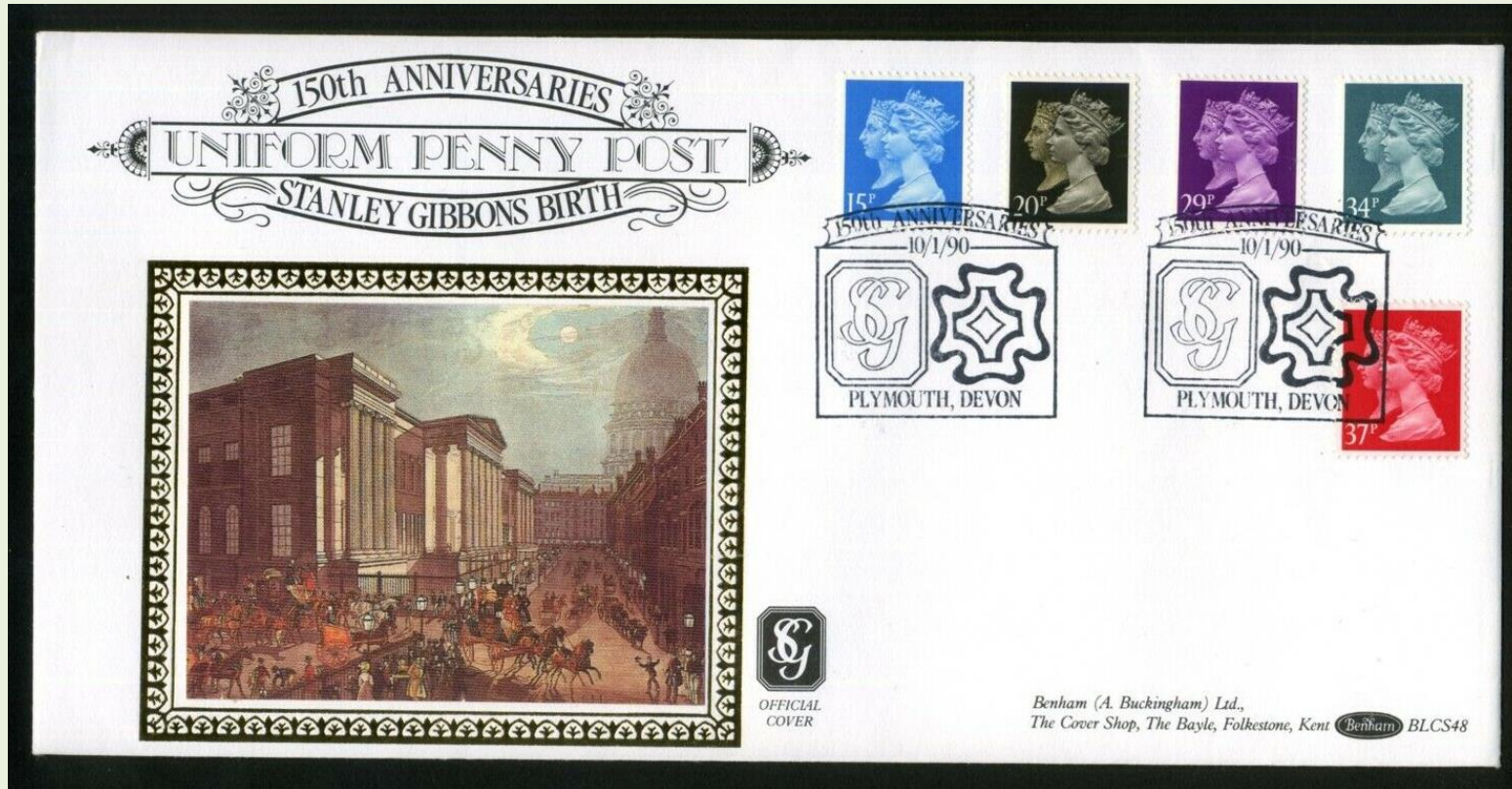


Stanley Gibbons

Stamp Catalogue

Nov 1865

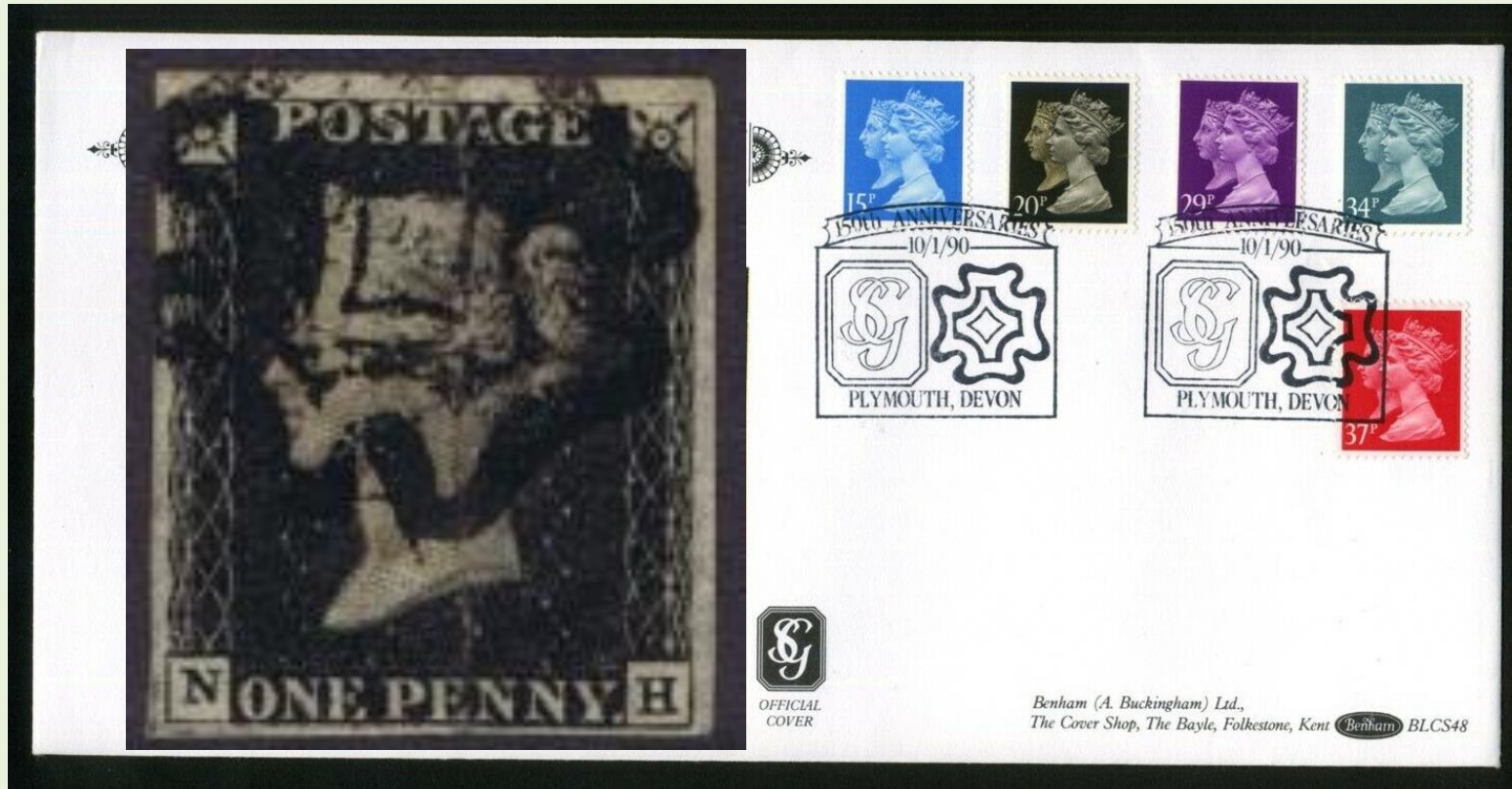
Plymouth on Stamps



FDC of the 1990 Anniversary of the Penny Black

Postmark is a "Plymouth" Maltese Cross

Plymouth on Stamps



FDC of the 1990 Anniversary of the Penny Black

Postmark is a “Plymouth” Maltese Cross

Plymouth on Stamps

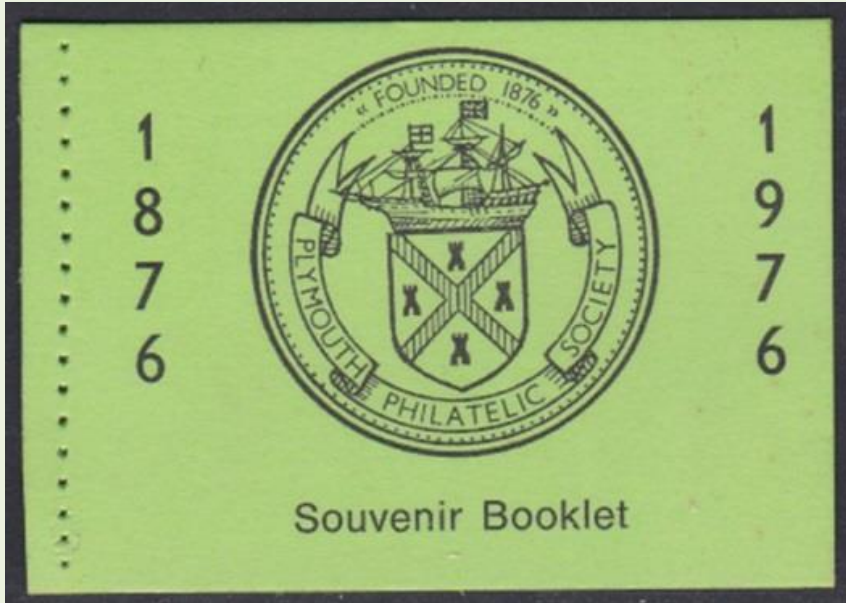


Victorian Duplex Postmarks

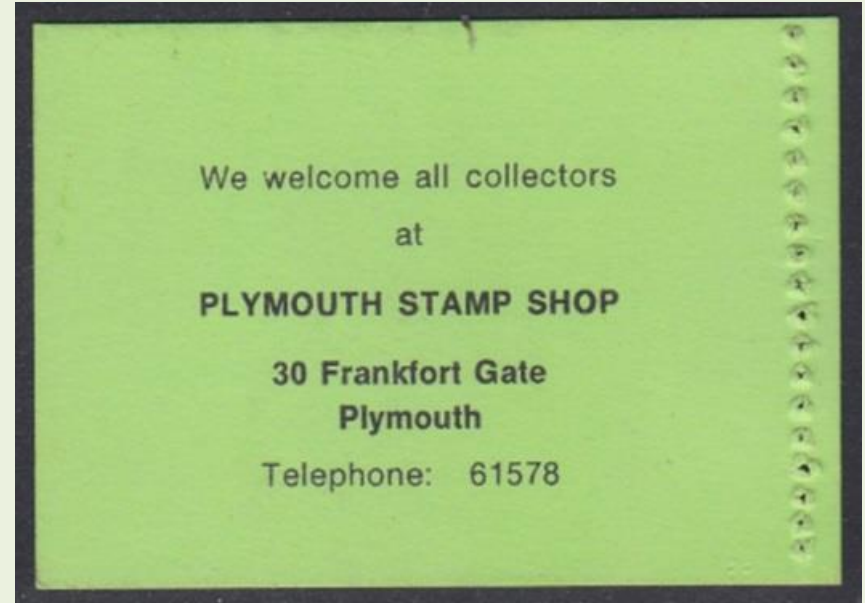
Plymouth on Stamps



Plymouth Philatelic Society Centenary Booklet – 1976 - outside covers



Front, outside



Rear, outside

Both are plain, inside

Plymouth on Stamps



Plymouth Philatelic Society Centenary Booklet – 1976 - Interior text

PLYMOUTH PHILATELIC SOCIETY

In 1876 a group of Plymothians and service personnel met fortnightly in private homes to discuss the new hobby of stamp collecting. Official programme cards were introduced in about 1891, since when the Society has met on a regular basis, broken only by the war years.

During the blitz on Plymouth in World War II the meeting place, the Athenaeum, together with the Philatelic Library and records, were destroyed.

The Society rose phoenix-like from its very ashes, as did the rest of the city, and is today an extremely hale and hearty centenarian with a membership of 120. Meetings are held in the Central Library on the first Thursday of each month.

In this its 100th Anniversary year, the Plymouth Philatelic Society is proud to welcome the 58th **Philatelic Congress of Great Britain**.

Plymouth on Stamps



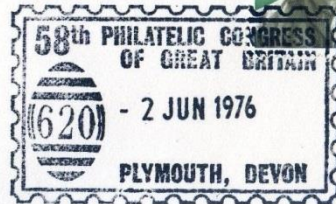
Plymouth Philatelic Society Centenary Booklet – 1976 - Interior text

**58th PHILATELIC CONGRESS
OF
GREAT BRITAIN**



**1776 - 1976
U. S. A. DAY**

The Bicentennial
of American
Independence
1776-1976



J.H. Lewis, Esq.,
Newlands View,
Hook Heath Road,
Woking,
Surrey. England.

The Society rose phoenix-like from its very ashes, as did the rest of the city, and is today an extremely hale and hearty centenarian with a membership of 120. Meetings are held in the Central Library on the first Thursday of each month.

In this its 100th Anniversary year, the Plymouth Philatelic Society is proud to welcome the 58th Philatelic Congress of Great Britain.

Plymouth on Stamps

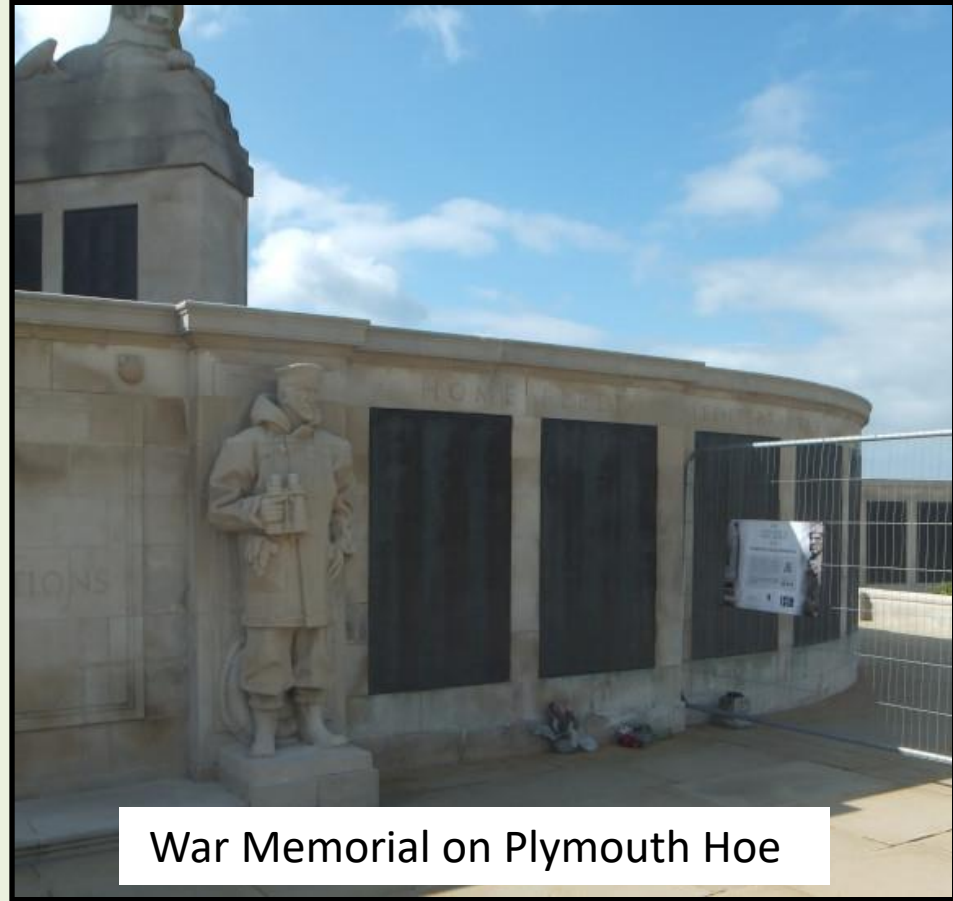


Plymouth Philatelic Society - Centenary Booklet – 1976 - Stamp panes in Argyle Colours



See our website www.plymouthphilatelicsociety.co.uk for more PPS history

Plymouth on Stamps



War Memorial on Plymouth Hoe

Plymouth on Stamps



War Memorial on Plymouth Hoe

Plymouth on Stamps

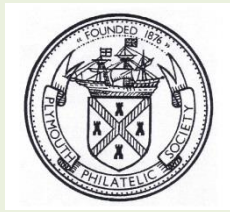


Back to the Recent issue (End of WW2)



War Memorial on Plymouth Hoe

Plymouth on Stamps



THE END

Display by Terry Cowlard, Plymouth Philatelic Society, 2021

Plymouth on Stamps



Introduction to
Gold Horizons,
Dave Cleaver,
15 Sept, 7pm



THE END

Display by Terry Cowlard, Plymouth Philatelic Society, 2021